



Become our pawtner today! Why?
So people don't have to choose between
helping their pets & getting the help they need.

Pawtner with
us Today!



2323 S Hardy Drive
Tempe, AZ 85282
www.lostourhome.org
(602) 445-7392



Our Mission: To Provide Compassionate Services to Pets & Pet Parents in Crisis

Lost Our Home Pet Rescue (LOH) in 2008, as a grassroots response to the drastic economic downturn and Phoenix-area foreclosures crisis that left thousands of people displaced and thousands of pets abandoned. During that time, Jodi Polanski, Lost Our Home Founder and Executive Director, worked as a local mortgage banker and witnessed these devastating results firsthand. She discovered many pets abandoned in foreclosed homes, often without food or water.

Jodi was quick to recognize this urgent need and launched Lost Our Home Pet Rescue with just a small network of volunteers who were focused on helping the pets that had been abandoned during the housing crisis.



Soon after inception, LOH quickly began offering programs for pets and pet parents facing life crises, such as those escaping domestic violence, individuals experiencing homelessness and/or financial hardship, veterans and the elderly, and people needing support due to an illness, injury, or need for rehabilitation, assisted living, or hospitalization.

Today, our proactive approach provides a continuum of care to keep pets out of the already overcrowded shelters and with the families that love them, while providing more options for vulnerable populations in our community and reducing the unnecessary euthanasia of homeless animals. And, although what necessitates our existence seems to ebb and flow, the demand for our services and the success of our service model is ever-present.

"We envision a world in which all pets have loving homes and are treated with dignity & respect."

~ Lost Our Home Board of Directors

We will achieve our vision
one pet at a time, with thoughtful
comprehensive services and community
partnerships that expand our reach.



Almost 15,000 hungry
pets fed through our
Pet Food Bank



Helped 9,500+ homeless
pets find forever homes



500-700 pets
spayed/neutered
each year



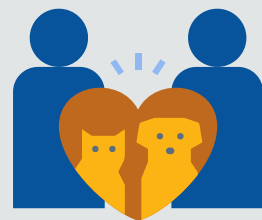
Serving an average of
2,300 pets every year



1,340+ pets
received foster
care in 2020



1,000+ Volunteers
300+ Active
Volunteers



Helped almost
25,000 pets and
over 5,500 people
in a time of crisis



400+ pets helped
due to partnership
with the Tempe
Police Department



Over 100,500 nights
of care provided to
Temporary Care Pets



Partner with several Maricopa
County Domestic Violence
shelters, AZ Pet Project, and
Social Workers to provide
resources and care.



1,100+ pets
reunited with families
after a crisis



9000+
Pets Vaccinated



Valued partnerships with several
domestic violence shelters to serve
victims and their pets.
LOH also designed a unique pet
Companion Shelter on the largest
domestic violence shelter campus in
Phoenix, and now delivers daily pet
care at that facility.



We are here for those who need us most.



OUR PROGRAMS

RESCUE FOR ABANDONED OR OWNER-SURRENDERED PETS

Foreclosure and eviction often lead to pets being abandoned without food, water, and shelter. We give these forgotten friends the comfort and care they need and the opportunity to find the new loving home they deserve. Pet parents who can no longer care for their animals can take solace in knowing that their pets will be safe in our shelter and that we will work hard to find them loving homes.

TEMPORARY CARE PROGRAM

Lost Our Home has the most comprehensive program in the Valley that offers temporary pet care due to crisis situations. For pets in need of up to 90 (sometimes 120) days of shelter, medical care, food, and enrichment due to pet parents experiencing a crisis such as domestic violence, homelessness, foreclosure, eviction, medical needs (physical or mental health requiring stays in hospital or rehabilitation facilities), house fires, and other life challenges - we are here to help.



DOMESTIC VIOLENCE



Statistics show 40% of women will not leave an abusive situation for fear of what would happen to their pet(s) if left behind, and 85% of women and children entering a shelter report that their abuser had threatened, injured, maimed, or killed the family pet for revenge or as psychological control. The fear is real. Yet only 3% of domestic violence shelters nationwide are able to accept pets, and the staff at domestic violence shelters have found children may experience additional trauma when separated from beloved pets. That is why Lost Our Home Pet Rescue specializes in helping domestic violence victims with their pets. Whether someone has a place to stay with family or friends or if they must go to a shelter, Lost Our Home is here to provide temporary housing for their pet(s) until they find a safe, permanent home.



PET FOOD BANK

No pet should ever go hungry, and no pet parent should have to suffer the stress of not being able to provide a basic necessity for their beloved pet. Through our pet food bank, we provide a safety net that helps pet parents who temporarily cannot afford to feed their pets.

“*Pets are humanizing.
They remind us we have an obligation
and responsibility to preserve and
nurture and care for all life*”
~ James Cromwell

Why connecting with a community partner is good for you

-  Nearly 85% of American consumers believe it's important that a company supports charitable causes and improve their local community while half say that they would switch to a company that supports a cause they believe in, with that percentage increasing for younger consumer.
-  Studies show that employees want to give back to their communities and that they like when their companies help them do that. Workplaces with a culture of volunteerism and corporate social responsibility find it boosts employee morale, improves team building, and increases the value of a company's brand.

-  Apart from the immeasurable satisfaction of helping to save lives, our corporate partners enjoy a variety of opportunities to receive community recognition, engage their employees, and expand their network of like-minded professionals.
-  Our Partners enjoy an unlimited supply of sloppy kisses, precious purrs, and waggin' tails!





HUMANE HERO

Recognition in Lost Our Home Pet Rescue Shelter.

Recognition In monthly rescue report reaching over 14,500 homes per month.

Logo in our annual report

Logo on Lost Our Home Pet Rescue website.

Partnership sign to display at your office.

Check presentation photo and press release opportunity.

8 social media posts a year.

Recognition as a partner at major events, including special VIP privileges, and tickets for multiple guests.

Recognition at our annual gala plus a full-page ad in print & virtual programs

Opportunity for a corporate volunteer day at LOHPR and/or customized volunteer opportunities.

Opportunity to receive an annual, customized LOHPR presentation for your employees at your place of business.

Enjoy the opportunity to network with other like-minded professionals and executives.

Pledge: \$100,000
Payment Period: 2 years



LEADER OF THE PACK

Recognition in Lost Our Home Pet Rescue Shelter.

Recognition In monthly rescue report reaching over 14,500 homes/month.

Logo in annual report & LOH website.

Partners sign to display at your office.

Check presentation photo and press release opportunity.

4 social media posts a year.

Recognition as a partner at major events, including special VIP privileges and multiple guest tickets

Recognition at annual gala plus a half-page ad in print & virtual programs.

Opportunity for a corporate volunteer day at LOHPR and/or customized volunteer opportunities.

Opportunity to network with other like-minded professionals & executives.

Pledge: \$50,000
Pay Period: 2 years



ULTI-MUTT FRIEND

Recognition in Lost Our Home Pet Rescue Shelter.

Recognition In monthly rescue report reaching over 14,500 homes/month.

Logo in the annual report and the LOH website.

Recognition as a partner at major events, including special VIP privileges & multiple guest tickets.

Recognition at our annual gala plus a quarter-page ad in our print and virtual programs.

Receive early invitations and reservations for events.



Pledge: \$20,000
Pay Period: 2 years



FUR-EVER FRIEND

- Recognition in Lost Our Home Pet Rescue Shelter.
- Recognition In our monthly report reaching over 14,500 homes each month.
- Logo in our annual report.
- Logo on our website.
- Recognition at our annual gala.
- Receive early invitations and reservations for events.

Pledge: \$10,000
Pay Period: 1 year



PURR-FECT PARTNER

- Recognition in Lost Our Home Pet Rescue Shelter.
- Recognition In our monthly report reaching over 14,500 homes each month.
- Logo in our annual report.
- Logo on our website.
- Receive early invitations and reservations for events.

Pledge: \$5,000
Pay Period: 1 year



ADOVO-CAT FRIEND

- Recognition In our monthly report reaching over 14,500 homes each month.
- Logo in our annual report.
- Receive early invitations and reservations for events.

Pledge: \$2,500
Pay Period: 1 year



PAWSITIVE COMPANION

- Recognition In our monthly report reaching over 14,500 homes each month.
- Logo in our annual report.

Pledge: \$1,000
Pay Period: 1 year



